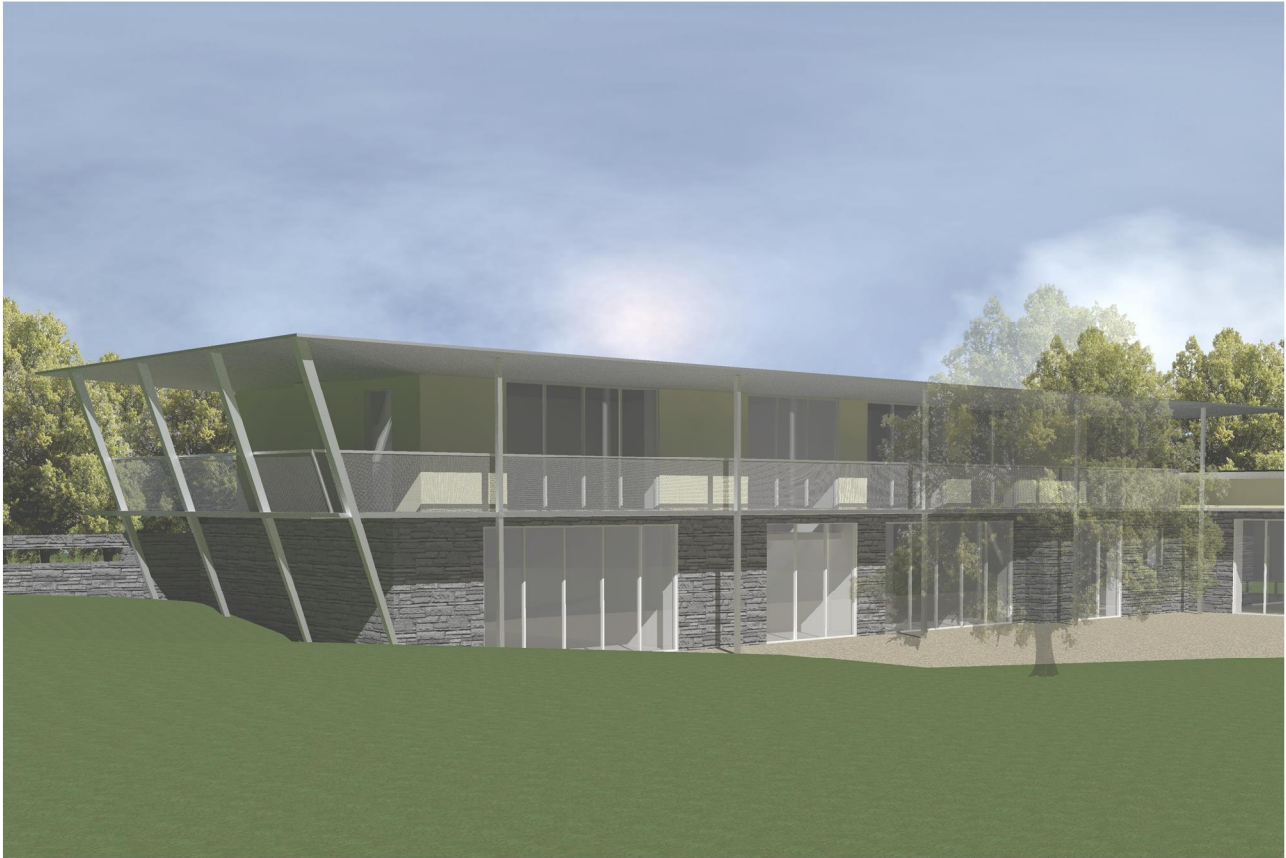


## Residential

Luxury, Contemporary, Private Passivhaus,  
Ashford Carbonel, Shropshire.

etc. Design Limited  
2 Carriers Fold Church Road  
Wombourne West Midlands WV5 9DH  
United Kingdom

Telephone: +44 (0) 1902 898282  
Fax: +44 (0) 1902 898283  
Email: enquiries@etcarchitects.co.uk  
Web: www.etcarchitects.co.uk



### Project Description

This large contemporary family home is located on the outskirts of the village. Situated in just over 5 acres of greenfield land the building takes best advantage of both the views and solar gains through extensive glazing on the south elevation. The primary intent, was to create a warm home, as such the building was designed to Passivhaus Principles with the intention of obtaining Passivhaus certification for the constructed home.

The design accommodates all the usual facilities for a family home, plus a swimming pool and double garage. As the village includes many different styles of building, from traditional red brick, through to contemporary timber clad, this design took reference of the materials used in the area, such as stone and render, giving them a modern twist.

### Client

Private Individual

### Floor Area

490m<sup>2</sup> (5450 sq ft)

### Construction Period

TBC

### Estimated Construction Cost

£900,000

### Project Team

Architects: etc Design Ltd, Planning  
Consultant: Les Stephan Planning

